



REVS_vs_WHITECAPS_8-12...REVS_vs_WHITECAPS_8-12...REVS_vs_WHITECAPS_8-12...REVS_vs_WHITECAPS_8-12...
_AP_6368



_MG_3665



_AP_5846



_AP_6097



REVS_vs_WHITECAPS_8-12...REVS_vs_WHITECAPS_8-12...REVS_vs_WHITECAPS_8-12...REVS_vs_WHITECAPS_8-12...
_MG_3708



_AP_6007



_MG_3943



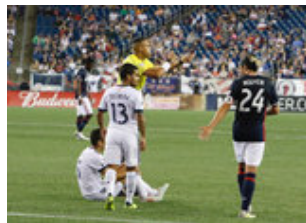
_MG_3611



REVS_vs_WHITECAPS_8-12...REVS_vs_WHITECAPS_8-12...REVS_vs_WHITECAPS_8-12...REVS_vs_WHITECAPS_8-12...
_MG_4369



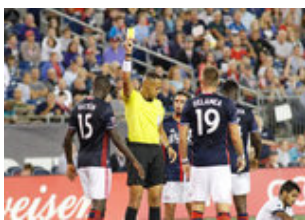
_MG_3612



_AP_6003



_MG_3602



REVS_vs_WHITECAPS_8-12...REVS_vs_WHITECAPS_8-12...REVS_vs_WHITECAPS_8-12...REVS_vs_WHITECAPS_8-12...
_MG_4078



_AP_6213



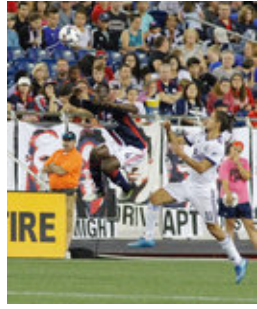
_MG_3821



_AP_5851



REVS_vs_WHITECAPS_8-12...REVS_vs_WHITECAPS_8-12...
_MG_3601



REVS_vs_WHITECAPS_8-12...REVS_vs_WHITECAPS_8-12...
_MG_3804



REVS_vs_WHITECAPS_8-12...REVS_vs_WHITECAPS_8-12...
_AP_5857



REVS_vs_WHITECAPS_8-12...REVS_vs_WHITECAPS_8-12...
_MG_3941



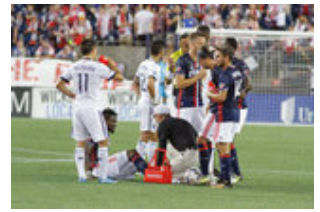
REVS_vs_WHITECAPS_8-12...REVS_vs_WHITECAPS_8-12...
_AP_6075



REVS_vs_WHITECAPS_8-12...REVS_vs_WHITECAPS_8-12...
_AP_6085



REVS_vs_WHITECAPS_8-12...REVS_vs_WHITECAPS_8-12...
_AP_6346



REVS_vs_WHITECAPS_8-12...REVS_vs_WHITECAPS_8-12...
_MG_3875



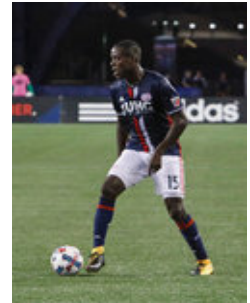
REVS_vs_WHITECAPS_8-12...REVS_vs_WHITECAPS_8-12...
_MG_3625



REVS_vs_WHITECAPS_8-12...REVS_vs_WHITECAPS_8-12...
_AP_5845



REVS_vs_WHITECAPS_8-12...REVS_vs_WHITECAPS_8-12...
_AP_6340



REVS_vs_WHITECAPS_8-12...REVS_vs_WHITECAPS_8-12...
_AP_5992



REVS_vs_WHITECAPS_8-12...REVS_vs_WHITECAPS_8-12...
_MG_3706



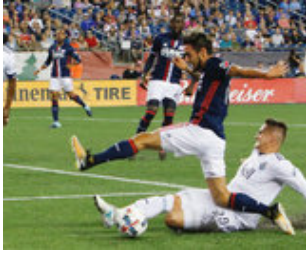
REVS_vs_WHITECAPS_8-12...REVS_vs_WHITECAPS_8-12...
_MG_3626



REVS_vs_WHITECAPS_8-12...REVS_vs_WHITECAPS_8-12...
_MG_4345



REVS_vs_WHITECAPS_8-12...REVS_vs_WHITECAPS_8-12...
_MG_3664



REVS_vs_WHITECAPS_8-12...REVS_vs_WHITECAPS_8-12...REVS_vs_WHITECAPS_8-12...REVS_vs_WHITECAPS_8-12...
_AP_5911



_MG_4047



_AP_6337



_MG_4200



REVS_vs_WHITECAPS_8-12...REVS_vs_WHITECAPS_8-12...REVS_vs_WHITECAPS_8-12...REVS_vs_WHITECAPS_8-12...
_MG_3582



_MG_4363



_AP_6070



_MG_3792



REVS_vs_WHITECAPS_8-12...REVS_vs_WHITECAPS_8-12...REVS_vs_WHITECAPS_8-12...REVS_vs_WHITECAPS_8-12...
_MG_3656



_MG_4054



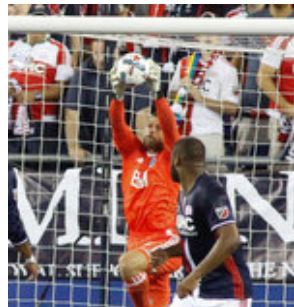
_AP_5909



_MG_4045



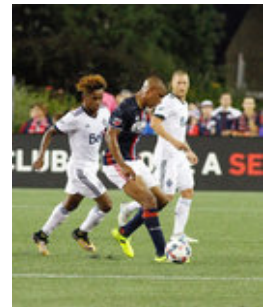
REVS_vs_WHITECAPS_8-12...REVS_vs_WHITECAPS_8-12...REVS_vs_WHITECAPS_8-12...REVS_vs_WHITECAPS_8-12...
_AP_6326



_MG_3974



_MG_3579



_MG_4339



REVS_vs_WHITECAPS_8-12...REVS_vs_WHITECAPS_8-12...REVS_vs_WHITECAPS_8-12...REVS_vs_WHITECAPS_8-12...
_AP_6069



_MG_3791



_MG_3704



_AP_5971



REVS_vs_WHITECAPS_8-12...REVS_vs_WHITECAPS_8-12...REVS_vs_WHITECAPS_8-12...REVS_vs_WHITECAPS_8-12...
_AP_6068



_MG_4044



_MG_4208



_AP_6324



REVS_vs_WHITECAPS_8-12...REVS_vs_WHITECAPS_8-12...REVS_vs_WHITECAPS_8-12...REVS_vs_WHITECAPS_8-12...
_AP_6250



_MG_3573



_MG_4344



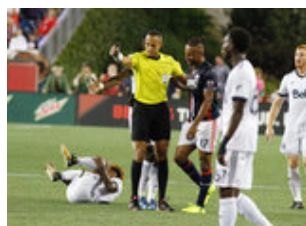
_AP_5908



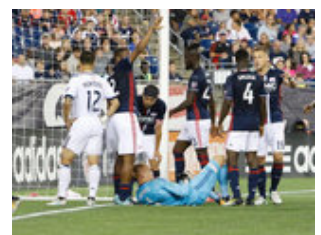
REVS_vs_WHITECAPS_8-12...REVS_vs_WHITECAPS_8-12...REVS_vs_WHITECAPS_8-12...REVS_vs_WHITECAPS_8-12...
_MG_3775



_MG_3933



_MG_4423



_AP_6201



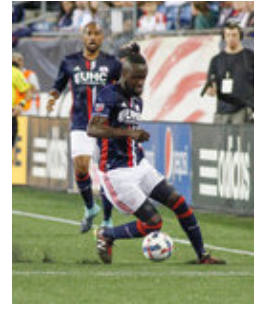
REVS_vs_WHITECAPS_8-12...REVS_vs_WHITECAPS_8-12...REVS_vs_WHITECAPS_8-12...REVS_vs_WHITECAPS_8-12...
_MG_4341



_AP_5906



_MG_4137



_MG_3703



REVS_vs_WHITECAPS_8-12...REVS_vs_WHITECAPS_8-12...REVS_vs_WHITECAPS_8-12...REVS_vs_WHITECAPS_8-12...
_MG_4399



_AP_5961



_AP_6064



_MG_4128



REVS_vs_WHITECAPS_8-12...REVS_vs_WHITECAPS_8-12...REVS_vs_WHITECAPS_8-12...REVS_vs_WHITECAPS_8-12...
_MG_3770



_AP_6235



_MG_3570



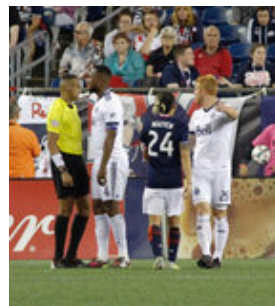
_MG_4261



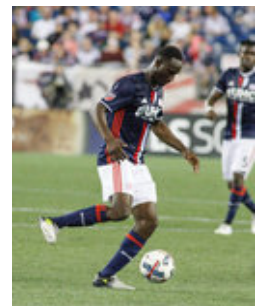
REVS_vs_WHITECAPS_8-12...REVS_vs_WHITECAPS_8-12...REVS_vs_WHITECAPS_8-12...REVS_vs_WHITECAPS_8-12...
_AP_5905



_MG_3769



_MG_3914



_MG_4159



REVS_vs_WHITECAPS_8-12...REVS_vs_WHITECAPS_8-12...REVS_vs_WHITECAPS_8-12...REVS_vs_WHITECAPS_8-12...
_AP_6178



_AP_6063



_MG_4126



_MG_4267



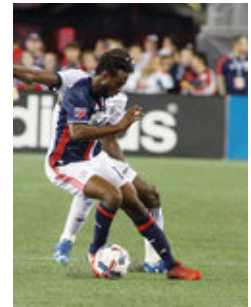
REVS_vs_WHITECAPS_8-12...REVS_vs_WHITECAPS_8-12...REVS_vs_WHITECAPS_8-12...REVS_vs_WHITECAPS_8-12...
_AP_6321



_MG_3922



_MG_3566



_MG_4287



REVS_vs_WHITECAPS_8-12...REVS_vs_WHITECAPS_8-12...REVS_vs_WHITECAPS_8-12...REVS_vs_WHITECAPS_8-12...
_AP_5904



_MG_4135



_MG_3891



_MG_4397



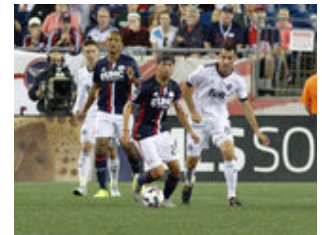
REVS_vs_WHITECAPS_8-12...REVS_vs_WHITECAPS_8-12...REVS_vs_WHITECAPS_8-12...REVS_vs_WHITECAPS_8-12...
_AP_6165



_AP_6062



_MG_4040



_MG_4239



REVS_vs_WHITECAPS_8-12...REVS_vs_WHITECAPS_8-12...REVS_vs_WHITECAPS_8-12...REVS_vs_WHITECAPS_8-12...
_MG_3764



_AP_6159



_MG_3556



_MG_4313



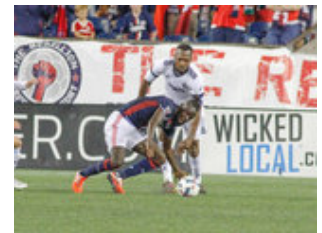
REVS_vs_WHITECAPS_8-12...REVS_vs_WHITECAPS_8-12...REVS_vs_WHITECAPS_8-12...REVS_vs_WHITECAPS_8-12...
_AP_5901



_MG_4131



_AP_6157



_MG_4396



REVS_vs_WHITECAPS_8-12...REVS_vs_WHITECAPS_8-12...REVS_vs_WHITECAPS_8-12...REVS_vs_WHITECAPS_8-12...
_AP_5960



_AP_6060



_MG_4133



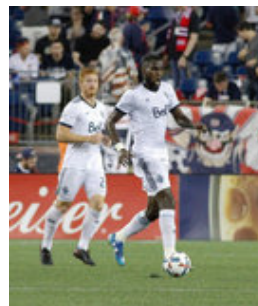
_MG_3762



REVS_vs_WHITECAPS_8-12...REVS_vs_WHITECAPS_8-12...REVS_vs_WHITECAPS_8-12...REVS_vs_WHITECAPS_8-12...
_MG_3702



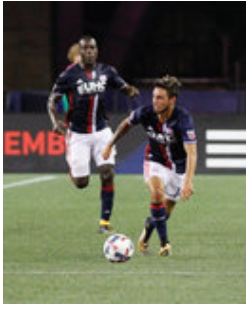
_AP_5896



_MG_4312



_AP_5898



REVS_vs_WHITECAPS_8-12...REVS_vs_WHITECAPS_8-12...REVS_vs_WHITECAPS_8-12...REVS_vs_WHITECAPS_8-12...
_MG_3761



_MG_3888



_MG_4207



_AP_6227



REVS_vs_WHITECAPS_8-12...REVS_vs_WHITECAPS_8-12...REVS_vs_WHITECAPS_8-12...REVS_vs_WHITECAPS_8-12...
_AP_6052



_MG_4118



_MG_4216



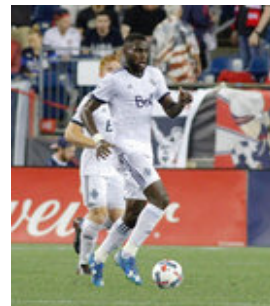
_AP_6319



REVS_vs_WHITECAPS_8-12...REVS_vs_WHITECAPS_8-12...REVS_vs_WHITECAPS_8-12...REVS_vs_WHITECAPS_8-12...
_MG_4039



_MG_3554



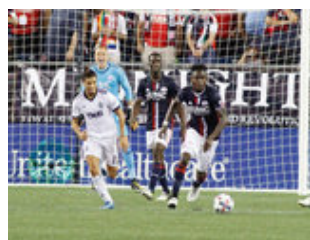
_MG_4311



_MG_3555



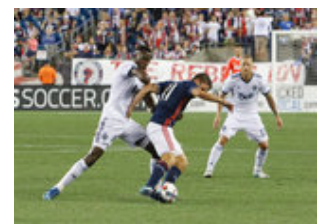
REVS_vs_WHITECAPS_8-12...REVS_vs_WHITECAPS_8-12...REVS_vs_WHITECAPS_8-12...REVS_vs_WHITECAPS_8-12...
_MG_3759



_MG_3887



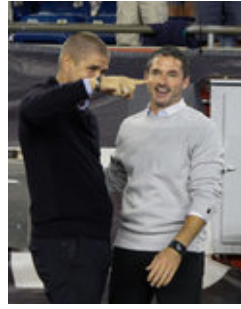
_MG_4368



_AP_6153



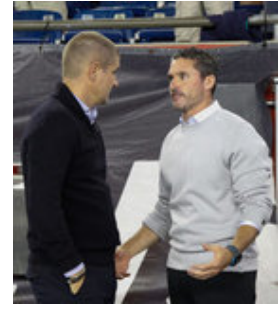
REVS_vs_WHITECAPS_8-12...REVS_vs_WHITECAPS_8-12...REVS_vs_WHITECAPS_8-12...REVS_vs_WHITECAPS_8-12...
_AP_6195



_MG_3550



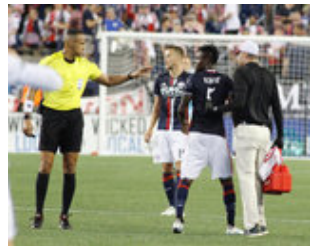
_MG_4201



_MG_3553



REVS_vs_WHITECAPS_8-12...REVS_vs_WHITECAPS_8-12...REVS_vs_WHITECAPS_8-12...REVS_vs_WHITECAPS_8-12...
_MG_3749



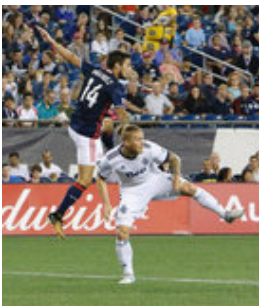
_MG_3881



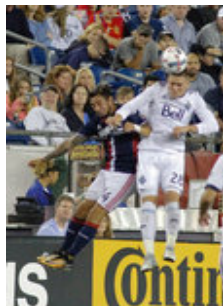
_MG_4206



_AP_6151



REVS_vs_WHITECAPS_8-12...REVS_vs_WHITECAPS_8-12...REVS_vs_WHITECAPS_8-12...REVS_vs_WHITECAPS_8-12...
_AP_6042



_MG_4110



_MG_4215



_AP_6316



REVS_vs_WHITECAPS_8-12...REVS_vs_WHITECAPS_8-12...REVS_vs_WHITECAPS_8-12...REVS_vs_WHITECAPS_8-12...
_MG_3631



_MG_3549



_MG_4340



_AP_5892



REVS_vs_WHITECAPS_8-12...REVS_vs_WHITECAPS_8-12...REVS_vs_WHITECAPS_8-12...REVS_vs_WHITECAPS_8-12...
_MG_3924



_MG_3842



_MG_4157



_AP_6149



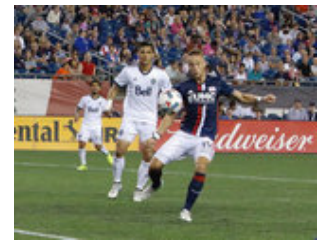
REVS_vs_WHITECAPS_8-12...REVS_vs_WHITECAPS_8-12...REVS_vs_WHITECAPS_8-12...REVS_vs_WHITECAPS_8-12...
_AP_6041



_MG_4038



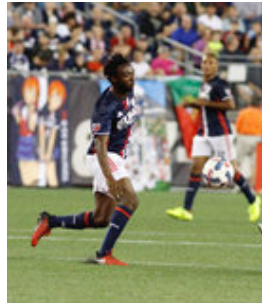
_MG_3741



_AP_6146



REVS_vs_WHITECAPS_8-12...REVS_vs_WHITECAPS_8-12...REVS_vs_WHITECAPS_8-12...REVS_vs_WHITECAPS_8-12...
_MG_3547



_MG_4279



_AP_5891



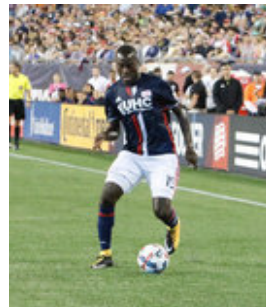
_MG_4123



REVS_vs_WHITECAPS_8-12...REVS_vs_WHITECAPS_8-12...REVS_vs_WHITECAPS_8-12...REVS_vs_WHITECAPS_8-12...
_MG_3689



_MG_4143



_AP_5955



_AP_6036



REVS_vs_WHITECAPS_8-12...REVS_vs_WHITECAPS_8-12...REVS_vs_WHITECAPS_8-12...REVS_vs_WHITECAPS_8-12...
_MG_4103



_MG_4202



_MG_3740



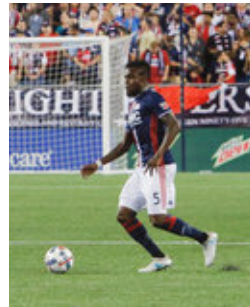
_AP_6224



REVS_vs_WHITECAPS_8-12...REVS_vs_WHITECAPS_8-12...REVS_vs_WHITECAPS_8-12...REVS_vs_WHITECAPS_8-12...
_MG_3546



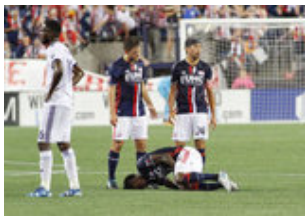
_MG_4222



_AP_5890



_MG_3737



REVS_vs_WHITECAPS_8-12...REVS_vs_WHITECAPS_8-12...REVS_vs_WHITECAPS_8-12...REVS_vs_WHITECAPS_8-12...
_MG_3867



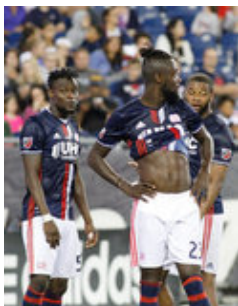
_MG_4155



_AP_6141



_AP_6031



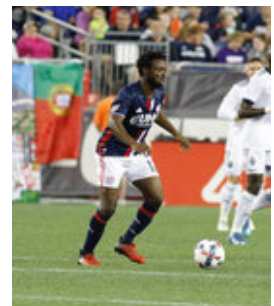
REVS_vs_WHITECAPS_8-12...REVS_vs_WHITECAPS_8-12...REVS_vs_WHITECAPS_8-12...REVS_vs_WHITECAPS_8-12...
_MG_4102



_MG_4199



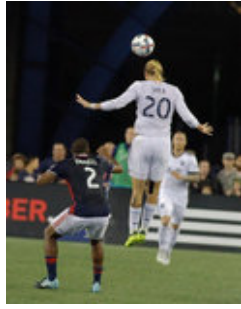
_AP_6309



_MG_4180



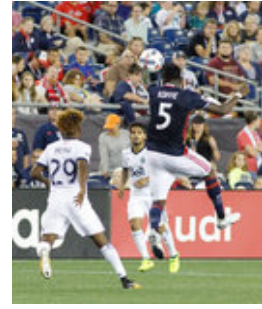
REVS_vs_WHITECAPS_8-12...REVS_vs_WHITECAPS_8-12...REVS_vs_WHITECAPS_8-12...REVS_vs_WHITECAPS_8-12...
_MG_3545



_MG_4196



_AP_5889



_MG_4114



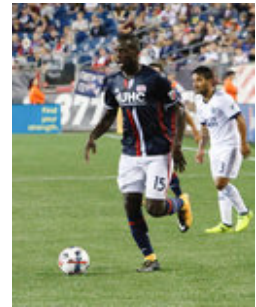
REVS_vs_WHITECAPS_8-12...REVS_vs_WHITECAPS_8-12...REVS_vs_WHITECAPS_8-12...REVS_vs_WHITECAPS_8-12...
_MG_3853



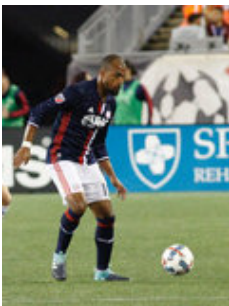
_MG_4141



_AP_6140



_AP_6029



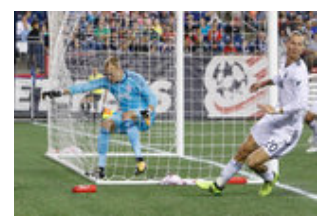
REVS_vs_WHITECAPS_8-12...REVS_vs_WHITECAPS_8-12...REVS_vs_WHITECAPS_8-12...REVS_vs_WHITECAPS_8-12...
_MG_4036



_MG_4174



_MG_3736



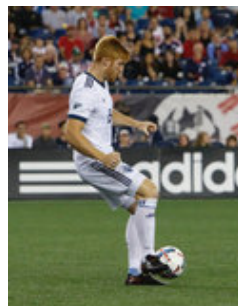
_AP_6139



REVS_vs_WHITECAPS_8-12...REVS_vs_WHITECAPS_8-12...REVS_vs_WHITECAPS_8-12...REVS_vs_WHITECAPS_8-12...
_MG_3544



_MG_4181



_AP_5886



_MG_4030



REVS_vs_WHITECAPS_8-12...REVS_vs_WHITECAPS_8-12...REVS_vs_WHITECAPS_8-12...REVS_vs_WHITECAPS_8-12...
_MG_3683



_MG_4156



_AP_5952



_AP_5879



REVS_vs_WHITECAPS_8-12...REVS_vs_WHITECAPS_8-12...REVS_vs_WHITECAPS_8-12...REVS_vs_WHITECAPS_8-12...
_MG_4108



_MG_4265



_MG_3735



_AP_6223



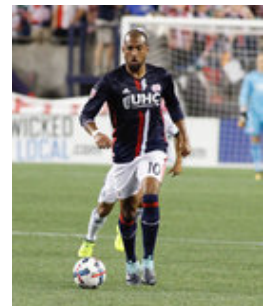
REVS_vs_WHITECAPS_8-12...REVS_vs_WHITECAPS_8-12...REVS_vs_WHITECAPS_8-12...REVS_vs_WHITECAPS_8-12...
_MG_3542



_MG_4218



_AP_6027



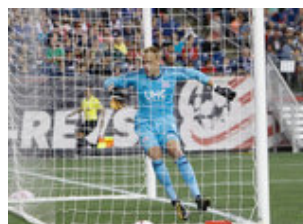
_MG_3734



REVS_vs_WHITECAPS_8-12...REVS_vs_WHITECAPS_8-12...REVS_vs_WHITECAPS_8-12...REVS_vs_WHITECAPS_8-12...
_MG_3849



_MG_4144



_AP_6138



_AP_6021



REVS_vs_WHITECAPS_8-12...REVS_vs_WHITECAPS_8-12...
_MG_4105



REVS_vs_WHITECAPS_8-12...REVS_vs_WHITECAPS_8-12...
_MG_4019



REVS_vs_WHITECAPS_8-12...REVS_vs_WHITECAPS_8-12...
_AP_6306



REVS_vs_WHITECAPS_8-12...REVS_vs_WHITECAPS_8-12...
_MG_3843



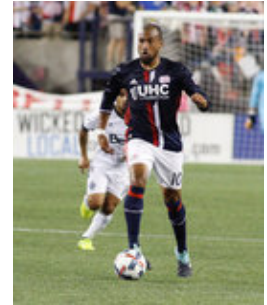
REVS_vs_WHITECAPS_8-12...REVS_vs_WHITECAPS_8-12...
_MG_3541



REVS_vs_WHITECAPS_8-12...REVS_vs_WHITECAPS_8-12...
_MG_4189



REVS_vs_WHITECAPS_8-12...REVS_vs_WHITECAPS_8-12...
_AP_5875



REVS_vs_WHITECAPS_8-12...REVS_vs_WHITECAPS_8-12...
_MG_3732



REVS_vs_WHITECAPS_8-12...REVS_vs_WHITECAPS_8-12...
_MG_3847



REVS_vs_WHITECAPS_8-12...REVS_vs_WHITECAPS_8-12...
_MG_4092



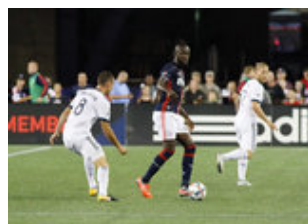
REVS_vs_WHITECAPS_8-12...REVS_vs_WHITECAPS_8-12...
_AP_6136



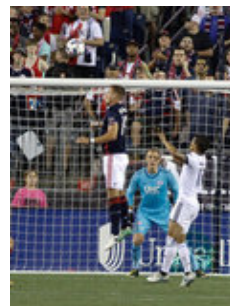
REVS_vs_WHITECAPS_8-12...REVS_vs_WHITECAPS_8-12...
_AP_6020



REVS_vs_WHITECAPS_8-12...REVS_vs_WHITECAPS_8-12...
_MG_3676



REVS_vs_WHITECAPS_8-12...REVS_vs_WHITECAPS_8-12...
_MG_4166



REVS_vs_WHITECAPS_8-12...REVS_vs_WHITECAPS_8-12...
_MG_3650



REVS_vs_WHITECAPS_8-12...REVS_vs_WHITECAPS_8-12...
_AP_6123



REVS_vs_WHITECAPS_8-12...REVS_vs_WHITECAPS_8-12...REVS_vs_WHITECAPS_8-12...REVS_vs_WHITECAPS_8-12...
_MG_3538



_MG_4280



_AP_5871



_MG_4028



REVS_vs_WHITECAPS_8-12...REVS_vs_WHITECAPS_8-12...REVS_vs_WHITECAPS_8-12...REVS_vs_WHITECAPS_8-12...
_AP_6218



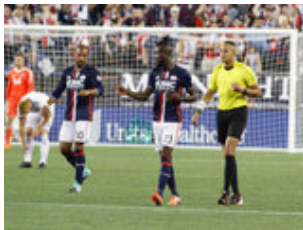
_MG_4142



_AP_5948



_AP_6019



REVS_vs_WHITECAPS_8-12...REVS_vs_WHITECAPS_8-12...REVS_vs_WHITECAPS_8-12...REVS_vs_WHITECAPS_8-12...
_MG_3929



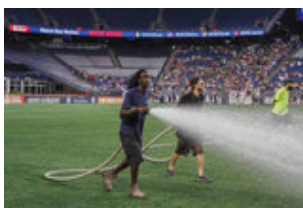
_MG_4010



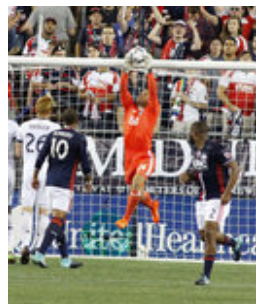
_MG_3730



_AP_6193



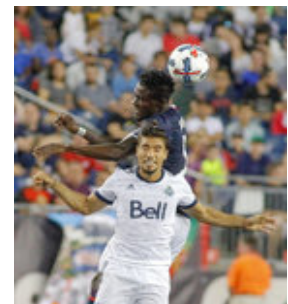
REVS_vs_WHITECAPS_8-12...REVS_vs_WHITECAPS_8-12...REVS_vs_WHITECAPS_8-12...REVS_vs_WHITECAPS_8-12...
_MG_3535



_MG_3973



_AP_5864



_MG_3723



REVS_vs_WHITECAPS_8-12...REVS_vs_WHITECAPS_8-12...REVS_vs_WHITECAPS_8-12...REVS_vs_WHITECAPS_8-12...
_MG_3628



_MG_4134



_AP_6118



_AP_6015



REVS_vs_WHITECAPS_8-12...REVS_vs_WHITECAPS_8-12...REVS_vs_WHITECAPS_8-12...REVS_vs_WHITECAPS_8-12...
_MG_4278



_MG_4158



_AP_6284



_MG_3622



REVS_vs_WHITECAPS_8-12...REVS_vs_WHITECAPS_8-12...REVS_vs_WHITECAPS_8-12...REVS_vs_WHITECAPS_8-12...
_MG_3533



_MG_3884



_AP_5863



_MG_4093



REVS_vs_WHITECAPS_8-12...REVS_vs_WHITECAPS_8-12...REVS_vs_WHITECAPS_8-12...REVS_vs_WHITECAPS_8-12...
_MG_3617



_MG_4072



_AP_6106



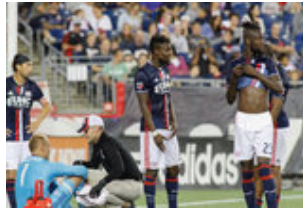
_AP_6014



REVS_vs_WHITECAPS_8-12...REVS_vs_WHITECAPS_8-12...REVS_vs_WHITECAPS_8-12...REVS_vs_WHITECAPS_8-12...
_MG_3673



_MG_3890



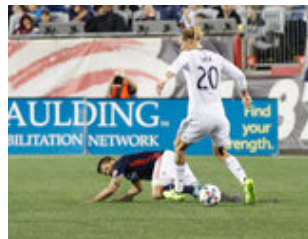
_MG_4099



_AP_6105



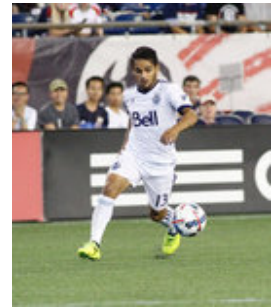
REVS_vs_WHITECAPS_8-12...REVS_vs_WHITECAPS_8-12...REVS_vs_WHITECAPS_8-12...REVS_vs_WHITECAPS_8-12...
_MG_3530



_MG_4187



_AP_5861



_MG_4064



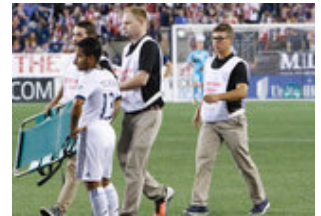
REVS_vs_WHITECAPS_8-12...REVS_vs_WHITECAPS_8-12...REVS_vs_WHITECAPS_8-12...REVS_vs_WHITECAPS_8-12...
_MG_3616



_MG_4066



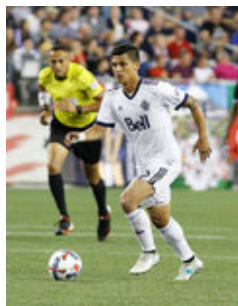
_AP_5945



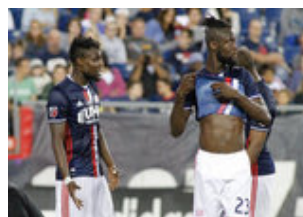
_AP_6010



REVS_vs_WHITECAPS_8-12...REVS_vs_WHITECAPS_8-12...REVS_vs_WHITECAPS_8-12...REVS_vs_WHITECAPS_8-12...
_MG_3716



_MG_3997



_MG_4098



_AP_6217



REVS_vs_WHITECAPS_8-12...REVS_vs_WHITECAPS_8-12...REVS_vs_WHITECAPS_8-12...REVS_vs_WHITECAPS_8-12...
_MG_3839



_MG_4015



_AP_5860



_MG_4398



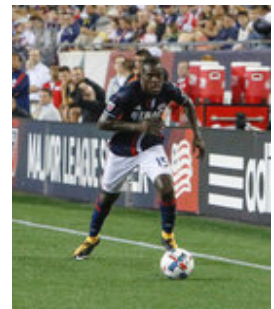
REVS_vs_WHITECAPS_8-12...REVS_vs_WHITECAPS_8-12...REVS_vs_WHITECAPS_8-12...REVS_vs_WHITECAPS_8-12...
_AP_6280



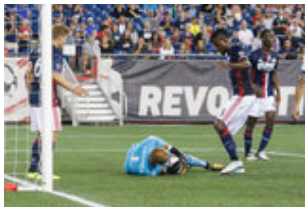
_MG_3615



_MG_3838



_AP_6103



REVS_vs_WHITECAPS_8-12...REVS_vs_WHITECAPS_8-12...REVS_vs_WHITECAPS_8-12...REVS_vs_WHITECAPS_8-12...
_AP_6370



_AP_5848



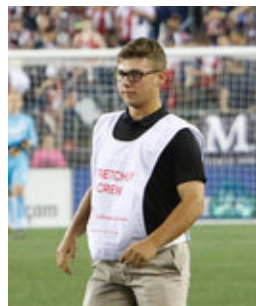
_AP_5859



_AP_6102



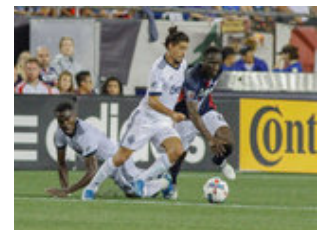
REVS_vs_WHITECAPS_8-12...REVS_vs_WHITECAPS_8-12...REVS_vs_WHITECAPS_8-12...REVS_vs_WHITECAPS_8-12...
_MG_3927



_AP_6009



_MG_4240



_MG_3827

